

Définir l'utilisateur de la console SSH

FOG 0.32

Open Source Computer Cloning Solution



Save Changes

Main Menu

- [Version Info](#)
- [License](#)
- [Kernel Updates](#)
- [PXE Boot Menu](#)
- [Client Updater](#)
- [MAC Address List](#)
- [FOG Settings](#)
- [Server Shell](#)
- [Log Viewer](#)
- [FOG Sourceforge Page](#)
- [FOG Home Page](#)

Plugin System

FOG_PLUGINSYS_ENABLED ⓘ

FOG_PLUGINSYS_DIR ⓘ

Save Changes

SSH Client

FOG_SSH_USERNAME ⓘ

FOG_SSH_PORT ⓘ

Save Changes

TFTP Server

FOG_TFTP_HOST ⓘ



Accès au serveur par la console SSH

The screenshot displays the FOG 0.32 web interface. At the top left, the logo 'FOG 0.32' is shown with the subtitle 'Open Source Computer Cloning Solution'. A navigation bar contains various icons, with a blue question mark icon highlighted by a red arrow and labeled 'Bouton Infos'. On the left side, a 'Main Menu' is listed with several links: 'Version Info', 'License', 'Kernel Updates', 'PXE Boot Menu', 'Client Updater', 'MAC Address List', 'FOG Settings', 'Server Shell', 'Log Viewer', 'FOG Sourceforge Page', and 'FOG Home Page'. A red arrow points to the 'Server Shell' link. In the foreground, a dialog box titled 'Select Authentication Method(s)' is open, displaying a list of options: 'publickey' and 'password'. The 'password' option is selected. The dialog box also includes 'Cancel' and 'Proceed' buttons.

En cliquant sur «Server Shell » on accède à la console serveur, il faut choisir l'authentification par mot de passe.

Accès au serveur par la console SSH

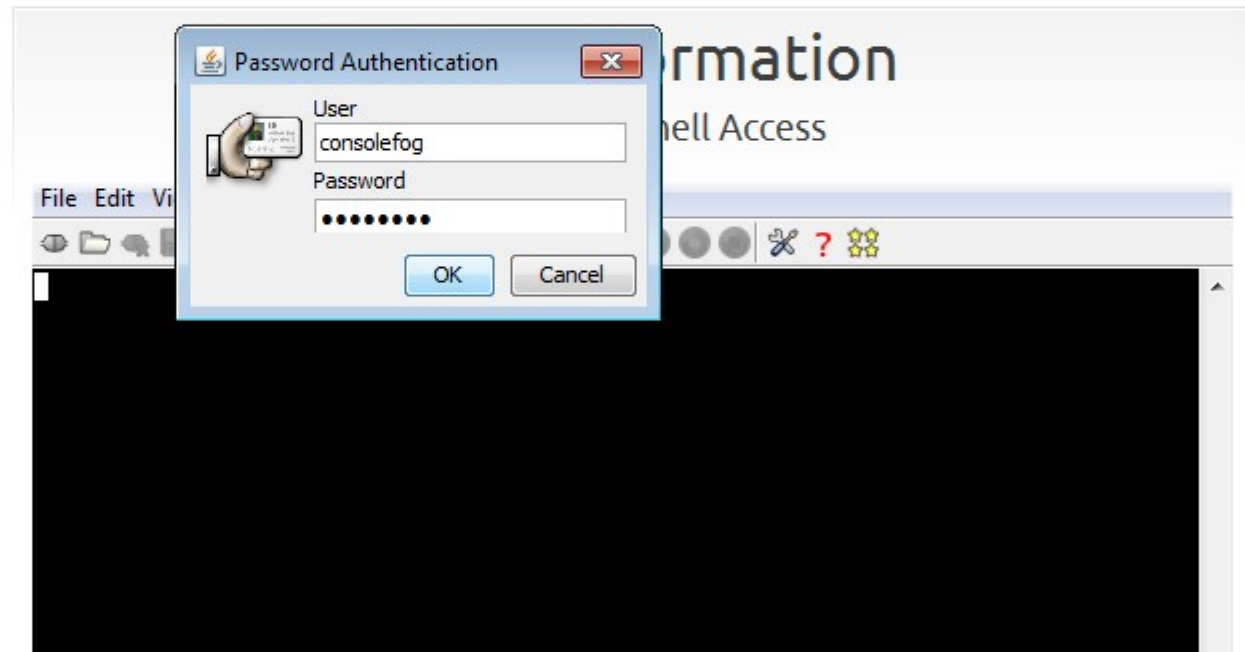
FOG 0.32

Open Source Computer Cloning Solution



Main Menu

- [Version Info](#)
- [License](#)
- [Kernel Updates](#)
- [PXE Boot Menu](#)
- [Client Updater](#)
- [MAC Address List](#)
- [FOG Settings](#)
- [Server Shell](#)
- [Log Viewer](#)
- [FOG Sourceforge Page](#)
- [FOG Home Page](#)



Entrer le login et mot de passe de l'utilisateur de la console
(pas celui de l'interface Web)

Accès au serveur par la console SSH



Main Menu

[Version Info](#)
[License](#)
[Kernel Updates](#)
[PXE Boot Menu](#)
[Client Updater](#)
[MAC Address List](#)
[FOG Settings](#)
[Server Shell](#)
[Log Viewer](#)
[FOG Sourceforge Page](#)
[FOG Home Page](#)

Other Information

FOG Server Shell Access

```
Welcome to Ubuntu 12.04.2 LTS (GNU/Linux 3.2.0-23-generic-pae i686)

* Documentation:  https://help.ubuntu.com/

System information as of Thu May 30 13:54:13 RET 2013

System load:  0.06          Processes:      96
Usage of /:   4.6% of 53.46GB  Users logged in:  1
Memory usage: 11%          IP address for eth0: 172.31.190.245
Swap usage:   0%

Graph this data and manage this system at https://landscape.canonical.com/

The programs included with the Ubuntu system are free software;
the exact distribution terms for each program are described in the
individual files in /usr/share/doc/*/copyright.

Ubuntu comes with ABSOLUTELY NO WARRANTY, to the extent permitted by
applicable law.

Could not chdir to home directory /home/consolefog: No such file or directory
/usr/bin/xauth:  error in locking authority file /home/consolefog/.Xauthority
$ █
```